

STRUGA SERVICES LIMITED



RC 999782

CONTENT

Introduction

Quality Management

HSE Policy

Our Services

Job References

Work Brochure

WORK BROCHURE

STRUGA

FABRICATION, INSTALLATION AND PRECOMMISSIONING OF NJABA PIPELINES ENDS(PROCESS) FACILITIES AT NJABA BY STRUGA, FOR ADDAX PETROLEUM (OML-124)- COMPLETED.



Fabrication of 12 inch & 6 inch Pig launchers & Receivers for Njaba End Facility project.



Hydrotest of Pig Launchers and Receivers for Njaba End Facilities Project

Painting of Fabricated Spools for Njaba End Facility Project.



Yard fabrication of Spools for Njaba End Facilities.

Complete fabricated and adequately Painted Pig Launchers and Receivers for Njaba End Facility Project.



WORK BROCHURE



Load out of Fabricated spools and supports for Site Installation works at Njaba Field.



Complete Fabrication and painting of 12 inch Manifold Spools for Njaba End Facility project.



Installation of Well Hook up Spools for Njaba End Facilities.

Installation of Well hook up spools, Gas lift lines, Instrumentation Equipment on going at Njaba Field.



Installation of Manifolds and Appurtenances.

Complete Installation of Njaba Manifold by Struga Services Ltd.



Installation of Manifold Spools, and Integration of associated Well hook-up spools.

Complete Installation & Commissioning of Njaba Process(END) Facilities by STRUGA SERVICES LTD



WORK BROCHURE



Complete Installation and Commissioning of Njaba Pig Launcher and Receiver by STRUGA SERVICES LTD



Complete Installation of Njaba Well hook up, Gas lift lines, Gas Scrubber and associated pipings by STRUGA SERVICES LTD



Complete Installation and Commissioning of Njaba Process (END) Facilities by STRUGA SERVICES LTD



Complete Installation and Commissioning of Njaba Process (END) Facilities by STRUGA SERVICES LTD



Installation of Gas Generators and Shelter for Njaba End Facility Project.

WORK BROCHURE



Installation of Master Control Panel for Njaba End Facility.



Callibration of Switches and Instrumentation Equipment for Njaba End Facility Project.



Installation of Well Head Control Panel



Complete installation and commissioning of Njaba Process (END) Facilities by STRUGA SERVICES LTD



WORK BROCHURE

STRUGA



Construction of 12" bulk crude line and 6" Gas Lift Pipelines X14KM IN OML 124 for LNL/ADDAX Petroleum.



Holiday Detection Activity on 12" Bulk Crude Line X14KM in OML 124 for LNL/ADDAX Petroleum.



Holiday Detection Activity on 6" Gas Lift Pipelines X14KM in OML 124 for LNL/ADDAX Petroleum.



Field Joint Coating



WORK BROCHURE

REPAIR AND REPLACEMENT OF CORRODED PIPING AND STRUCTURAL SECTION AT AMENAM, OML-99.



Procured Materials



Blasted and painted Structural Members, ready for load-out.

WORK BROCHURE

ONSHORE FABRICATION – DECK REINFORCEMENT FOR TGA ROTOR STORAGE AT AMENAM, OML-99

[Executed by STRUGA for VAGAN OIL & GAS LTD/TOTAL]



WORK BROCHURE

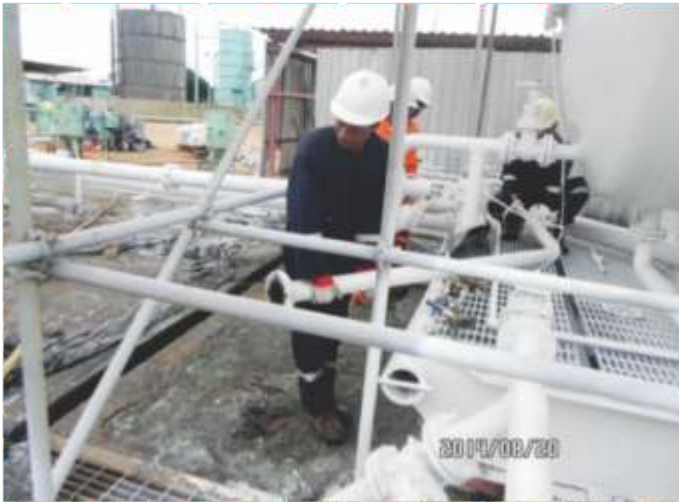


BLASTING AND PAINTING OF FABRICATED STRUCTURAL MEMBERS.



LOAD-OUT OF STRUCTURAL MEMBERS.

WORK BROCHURE



Repair on Pinhole leak on Izombe V300 Water outlet by STRUGA SERVICES LTD/OIS for Addax Petroleum.



Top sides installation of Oron WS. KITA Marine &akam Boat Landings by STRUGA SERVICES LTD /ASCOT for APDNL



Rehabilitation of Addax Metering Skid_ Ebocha by STRUGA SERVICES LTD/OIS for Addax Petroleum

WORK BROCHURE

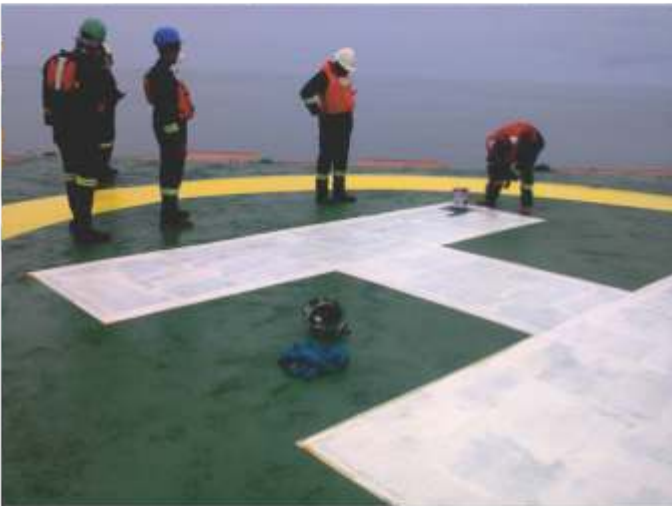


Piping fabrication and site Installation Of T-2500B Booster pump pipeline at Izombe Flow Station By STRUGA SERVICES LTD /ASCOT for Addax Petroleum



Onshore fabrication and Offshore Installation Of KTM 13& 14 Well Hook-up Spools by STRUGA SERVICES LTD /ASCOT for Addax Petroleum.

WORK BROCHURE



Blasting & Painting of 5NOS Offshore Helideck Production by STRUGA SERVICES LTD /ASCOT For Addax Petroleum



NDT on fabricated Oron WP, ADNB, TMMP, ADPP and Ebughu Boat Landings by STRUGA SERVICES LTD /ASCOT for Addax Petroleum

WORK BROCHURE



Installation of 2NOS Gas Fueled Generator at Izombe Flow Station by STRUGA SERVICES LTD /ASCOT for Addax Petroleum



Onshore fabrication and Offshore installation of ADS Deck Extension and Security Hardening Project by STRUGA SERVICES LTD/OIS For Addax Petroleum.



Construction of 26 Metre Diameter Tank Base Agwa Flow Station.

WORK BROCHURE



Blasting and Painting Of ADSI Water Injection Platform for Addax Petroleum.

CLIENTELE



ExxonMobil

CORE VALUES:

Ambition
Competence
Credibility
Excellence

CORE SERVICES:

Project Management
Major Construction Services
Offshore/ Onshore Pipeline Laying Services
Integrity Test Services
Onshore Pipeline/ Storage Facility Maintenance
Rehabilitation/ Upgrade/ Fabrication Works
Procurement Services
Civil Construction/Engineering & Consultancy Services
Protocol and Logistics Services



RC 999782

STRUGA SERVICES LIMITED

Port Harcourt Address: KM 4 East -West Road, Rumuokoro-Choba Route, Port-Harcourt, Rivers State, Nigeria.

Owerri Address: Plot C4/64, Irete Industrial Area, Off Coca-cola Depot, Irete, Imo State.

Tel: +2348030559008, +2348035090104

E-mail: info@strugaservices.com, strugaservices@gmail.com

Web Address: www.strugaservices.com